

Mets - Kalimarmaro

## Mirage Central

????????? ??????????: 1062647



???? ??????????: 11.000 EUR

???????? ??????????: 1062647 - 11636 Mets - Kalimarmaro

- ?? ??? ??????
- ?? ?????????
- ??? ?????? ??????????
- ?????????????? ????????????????

???????? ??????????: 1062647 - 11636 Mets - Kalimarmaro

?? ??? ??????

|                     |         |                    |            |
|---------------------|---------|--------------------|------------|
| ???????? ?????????? | 1062647 | ???? ??????????    | 11.000 EUR |
| ???????????? ???    | 3       | ????????????       | ??????     |
| ??????????          |         | ?????????? ??????? | ca. 246 m² |
| ??????????          | 2       |                    |            |

???????? ?????????: 1062647 - 11636 Mets - Kalimarmaro

?? ????????





???????? ?????????: 1062647 - 11636 Mets - Kalimarmaro

?? ????????



????????? ??????????: 1062647 - 11636 Mets - Kalimarmaro

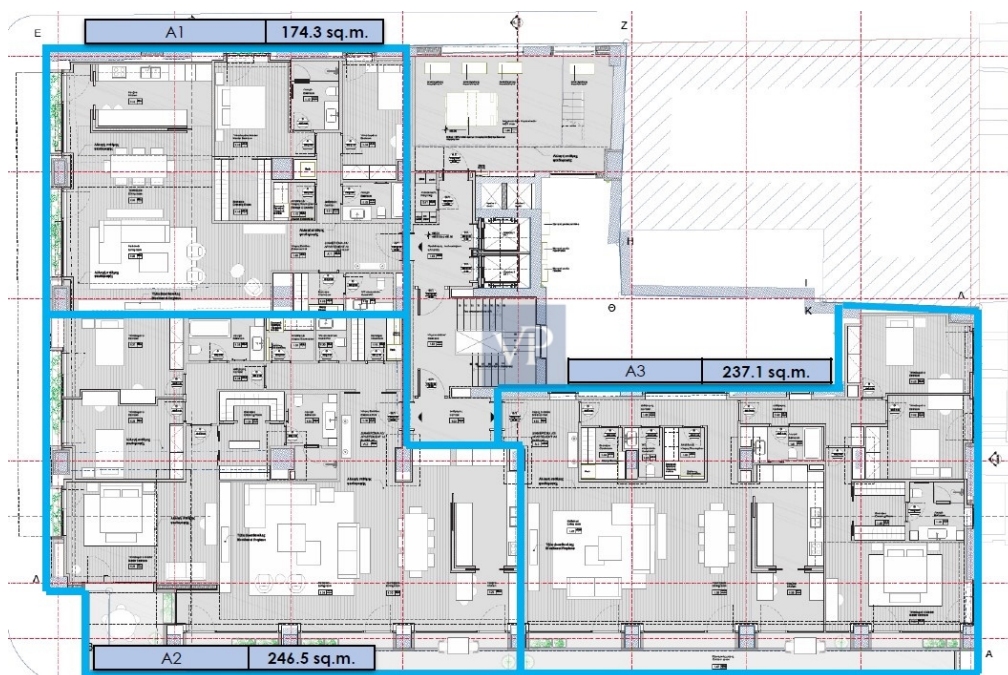
?? ?????????





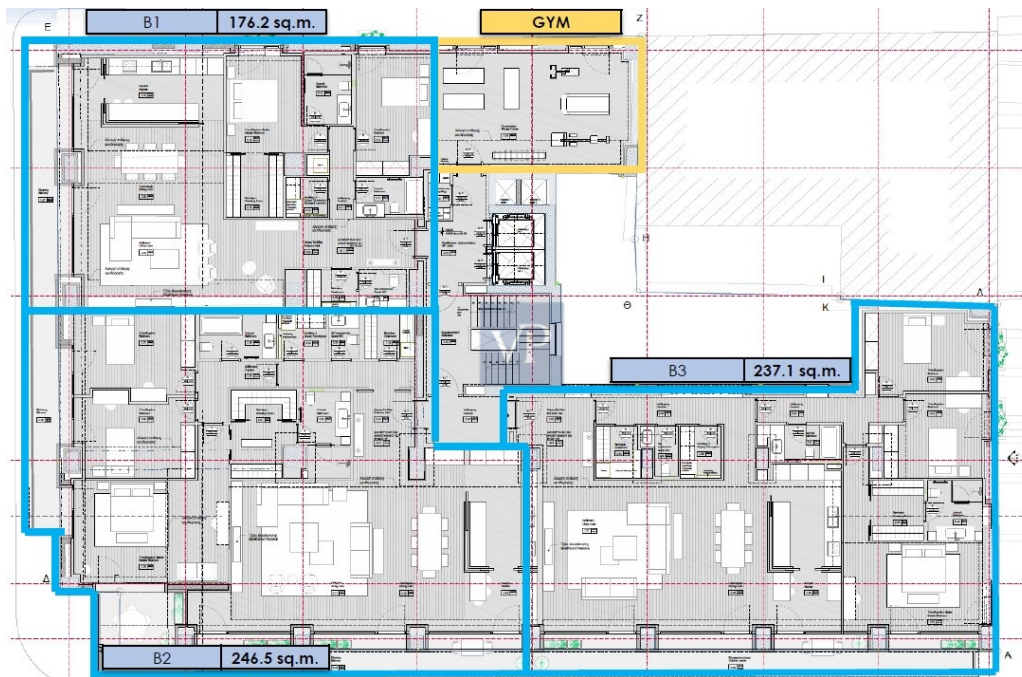
??????? ???????: 1062647 - 11636 Mets - Kalimarmaro

?? ????????



??????? ???????: 1062647 - 11636 Mets - Kalimarmaro

?? ????????





??????? ???????: 1062647 - 11636 Mets - Kalimarmaro

## ??? ?????? ?????????

Mirage Central is a modern masterpiece that embodies both comfort and sophistication in one of Athens' most desirable neighborhoods—Mets-Kalimarmaro. Situated on the 2nd floor of an elegant building, this newly renovated apartment combines luxury with practicality, offering a living space that's perfect for those who value style and convenience.

With three spacious bedrooms, including a luxurious master suite, Mirage Central provides the perfect balance of relaxation and function. Two meticulously designed bathrooms and an additional guest WC ensure convenience and comfort for every member of the household. The expansive, open-concept living room flows seamlessly into a sleek, modern kitchen, ideal for both quiet evenings and lively entertaining.

Thoughtfully designed with sustainability in mind, Mirage Central features energy-efficient double-glazed windows and a heat pump heating system, ensuring a comfortable living environment throughout the year while also minimizing energy consumption. The apartment's wooden floors add a touch of warmth and elegance, perfectly complementing the contemporary finishes.

The corner positioning of the apartment allows for unobstructed city views, giving you a rare glimpse of the vibrant life that surrounds you. Whether it's the stunning beauty of Athens' skyline or the vibrant energy of the streets below, you'll find yourself immersed in the city's pulse from the comfort of your own home.

Located just moments away from the city center, the Acropolis, cultural museums, and with excellent transportation links, Mirage Central places you at the heart of Athens' rich history and dynamic present. Underground parking and additional storage space are included, making this the perfect home for those who want luxury, convenience, and easy access to everything Athens has to offer.

At Mirage Central, you're not just renting an apartment—you're embracing an elevated lifestyle, with the best of Athens right at your doorstep.

??????? ?????????: 1062647 - 11636 Mets - Kalimarmaro

????????????? ???????????????

??? ?????????????? ?????????????, ?????????????? ?? ??? ?????????? ?????????????? ???:

VON POLL REAL ESTATE Athens

---

Kifisias Avenue 227, 14561 Kifisia

Tel.: +30 21 06 14 87 77

E-Mail: [salesgreece@von-poll.com](mailto:salesgreece@von-poll.com)

???? ?????????? ???????? ??? von Poll Immobilien GmbH

---

[www.von-poll.com](http://www.von-poll.com)