

Corfu

Sole Estate

???????? ??: 918772



???? ??: 9.500.000 EUR • ??: 7.110 m²

??????? ????????: 918772 - 14561 Corfu

- ☐ ?? ??? ??????
- ☐ ?? ????????
- ☐ ??? ?????? ??????????
- ☐ ????????????? ????????????????

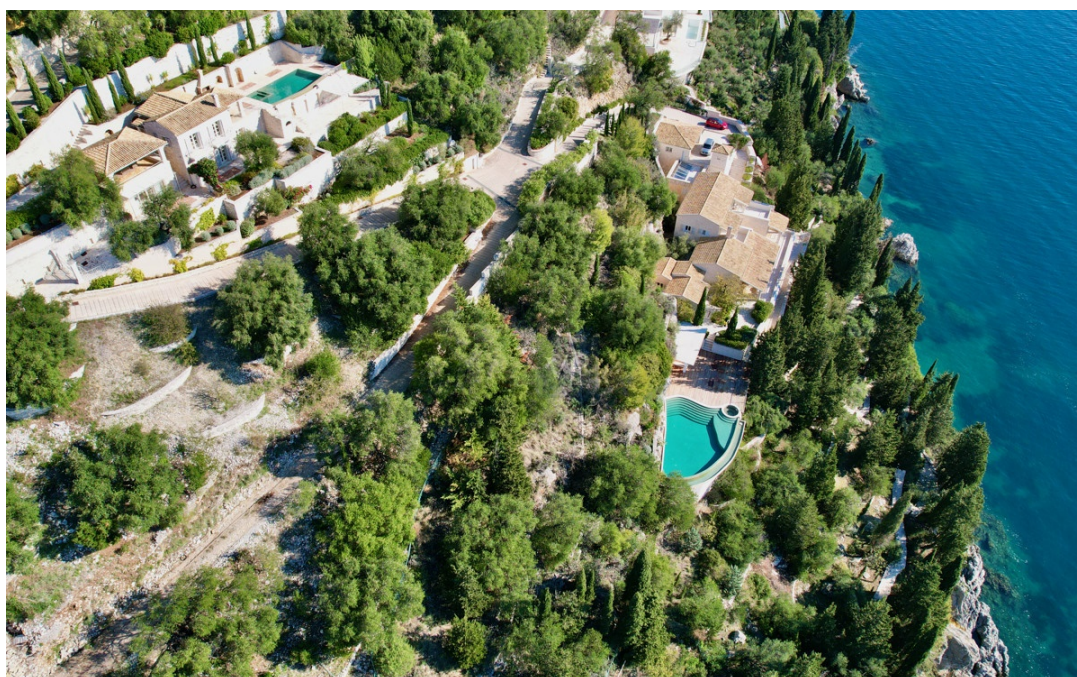
??????? ???????: 918772 - 14561 Corfu

?? ??? ??????

??????? ????????	918772	???? ??????	9.500.000 EUR
?????????? ??	12	?????	?????
?????????		????????? ??????	ca. 875 m²
?????????	13		

??????? ???????? : 918772 - 14561 Corfu

?? ????????



??????? ???????? : 918772 - 14561 Corfu

?? ????????



??????? ???????? : 918772 - 14561 Corfu

?? ????????



??????? ???????? : 918772 - 14561 Corfu

?? ????????



??????? ?????????: 918772 - 14561 Corfu

?? ????????



??????? ???????? : 918772 - 14561 Corfu

?? ????????



??????? ???????? : 918772 - 14561 Corfu

?? ????????



??????? ???????? : 918772 - 14561 Corfu

?? ????????



??????? ???????? : 918772 - 14561 Corfu

?? ????????



??????? ???????? : 918772 - 14561 Corfu

?? ????????



??????? ???????? : 918772 - 14561 Corfu

?? ????????



??????? ???????? : 918772 - 14561 Corfu

?? ????????



??????? ???????? : 918772 - 14561 Corfu

?? ????????



??????? ???????? : 918772 - 14561 Corfu

?? ????????



??????? ?????????: 918772 - 14561 Corfu

??? ?????? ??????????

This luxury estate presents a rare opportunity to own a magnificent property in the idyllic setting of Agni, nestled along the picturesque North East coast of Corfu. Comprising three distinct stone-built villas, each with its own private pool and direct access to the sea, this estate offers a truly exclusive retreat. Located just off the road to Agni Bay, the estate enjoys a privileged position surrounded by mature olive groves and majestic cypress trees, ensuring utmost privacy and tranquility. The meticulously landscaped grounds feature stone walls, preserving the traditional character of the area while providing a stunning backdrop to the villas. The main villa, boasting an impressive 620 square meters of living space, stands right next to the sea on a spacious plot of 7,113 square meters. Offering six ensuite bedrooms, this villa features a private infinity pool and exclusive access to a small cove and decked area by the crystal-clear waters. Elegant living spaces include a modern kitchen, dining room, steam room, gymnasium, and a cinema room, providing the ultimate in luxury living. Villa 2, covering 187 square meters, offers three ensuite bedrooms and a separate studio apartment on a plot of 2,735 square meters. Its blend of traditional and contemporary design elements creates a harmonious ambiance throughout. The villa includes a fully equipped kitchen, open-plan living area with fireplace, and a delightful infinity pool surrounded by paved sun terraces and a covered dining area. Lastly, Villa 3, with 68 square meters of living space, features two ensuite bathrooms on a 1,984 square meter plot. This charming villa offers modern comforts with wooden beamed ceilings, a fireplace, and a fully fitted kitchen. Its external area boasts a living and dining space, paved sun terrace, and a private infinity pool, all set against the backdrop of breathtaking sea views. With its enviable location, luxurious amenities, and unparalleled natural beauty, this estate presents an extraordinary opportunity for discerning buyers seeking an exclusive retreat on the stunning island of Corfu.

??????? ???????: 918772 - 14561 Corfu

????????????? ????????????????

??? ?????????????? ??????????????, ?????????????? ?? ??? ?????????? ?????????????? ???:

VON POLL REAL ESTATE Athens

Kifisias Avenue 227 Athen
E-Mail: salesgreece@von-poll.com

To Disclaimer of von Poll Immobilien GmbH

www.von-poll.com